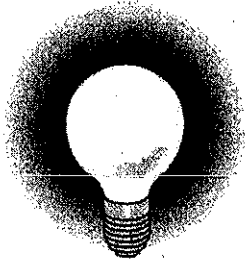


# Making Inferences



Read the following observations. Then make inferences that explain each observation. Remember, there may be more than one logical explanation.

**Observation 1:** You observe that the sky at noon is darkening.

Your inference: \_\_\_\_\_

**Observation 2:** The principal interrupts class and calls a student from the room.

Your inference: \_\_\_\_\_

**Observation 3:** All middle school students are bringing lunch from home.

Your inference: \_\_\_\_\_

**Observation 4:** A former rock-and-roll band member has poor hearing.

Your inference: \_\_\_\_\_

**Observation 5:** You leave a movie theater and see that the street is wet.

Your inference: \_\_\_\_\_

**Observation 6:** During a handshake, you feel that the palm of the individual's hand is rough and hard.

Your inference: \_\_\_\_\_

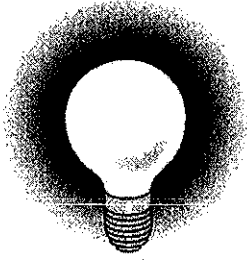
**Observation 7:** The classroom lights are off.

Your inference: \_\_\_\_\_

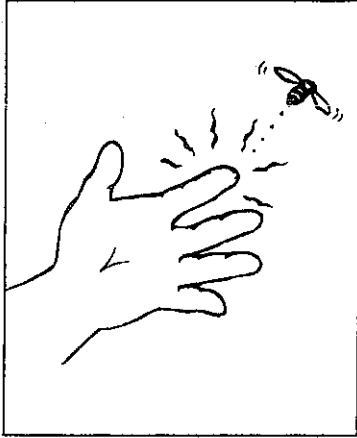
**Observation 8:** A siren is heard going past the school.

Your inference: \_\_\_\_\_

# Observations and Inferences



Use the pictures that follow to make observations and inferences.

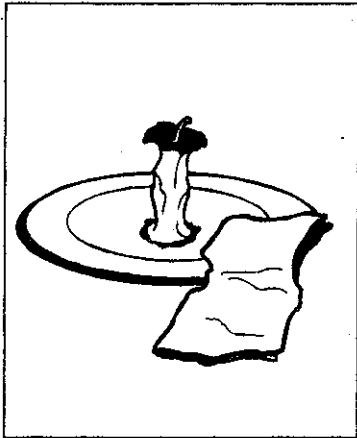


**Observations:** \_\_\_\_\_

\_\_\_\_\_  
\_\_\_\_\_

**Inferences:** \_\_\_\_\_

\_\_\_\_\_  
\_\_\_\_\_  
\_\_\_\_\_

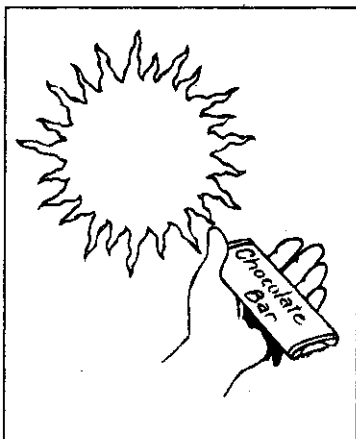


**Observations:** \_\_\_\_\_

\_\_\_\_\_  
\_\_\_\_\_

**Inferences:** \_\_\_\_\_

\_\_\_\_\_  
\_\_\_\_\_  
\_\_\_\_\_



**Observations:** \_\_\_\_\_

\_\_\_\_\_  
\_\_\_\_\_

**Inferences:** \_\_\_\_\_

\_\_\_\_\_  
\_\_\_\_\_  
\_\_\_\_\_